



Bathing establishment Fact Sheet

Bathhouse name	BAGNO ROSSI SANDRO
Address	VIA LUNGOMARE AMERIGO VESPUCCI, 34
City	MARINA DI MASSA (MS)
Contacts	+39 0585 244032
Website	NOT PRESENT

TESTED BY: [Handy Social Promotion Association Surpassable](#) in summer 2023

Please note The following information refers to the verification date shown at the bottom of each card. **The Association** is not responsible for any significant changes made by the property after the visit.

Summary

Bathing establishment Fact Sheet	1
Arrival at the facility	2
Private/public parking.....	2
Pathway from the parking lot to the main entrance	2
Reception.....	3
Bar/restaurant	4
Internal pathways and common services	5
Internal pathways.....	5
Toilet and shower accessible to guests with reduced mobility	5
Changing room	7
Beach.....	8
Children's play area	9
Swimming pool	9
Doctors' Offices/Healthcare Facilities	9


Project carried out with the contribution of the





Arrival at the facility

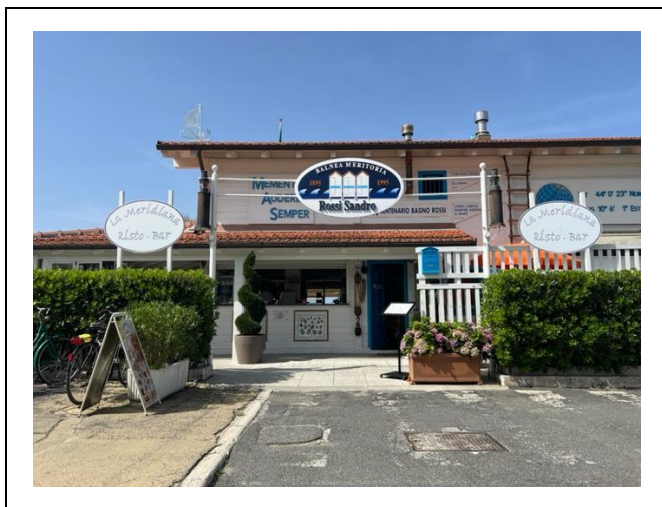
Private/public parking

Presence of private parking	NO
Type of private car park	Not present
Presence of parking space reserved for people with disabilities	NO
Public parking nearby	YES with n. 1/2 places reserved for the disabled at approx. 50/100 meters
Type of public car park	asphalt
	Public parking reserved for people with disabilities

Pathway from the parking lot to the main entrance

Pathway from the car park to the entrance	By means of connecting ramps from the road surface to the pavement. The entrance is accessible via a ramp: length 15 cm, width >90 cm, slope 16 %
There are markers and tactile maps	NO
Usable door/entrance width	more than 90 cm





Reception

Umbrella booking system	<input type="checkbox"/> Via web <input checked="" type="checkbox"/> By phone <input checked="" type="checkbox"/> On-site
Presence of multilingual staff	YES
Presence of plant plan with key to services available	NO
Presence of visuo-tactile map	NO
Bulletin board/information panels at an average height of 130 cm in a well-lit area and font size at least 14 dpi with a contrast ratio greater than 4.5:1	NO
The staff attended training courses on welcoming people with different disabilities	NO





Bar/restaurant

Type of venue	Refreshment point
Access to the premises	Flat
Usable door/entrance width	more than 90 cm
Bar counter	more than 100 cm
Types of tables	legged
Space underneath the tables from the floor	66 cm
Multilingual menu	YES
Menus with large print fonts	NO
Braille menu	NO
Table service for people with disabilities	YES
Availability of gluten-free food	<input type="checkbox"/> bread <input type="checkbox"/> pasta <input type="checkbox"/> biscuits <input checked="" type="checkbox"/> ice cream <input type="checkbox"/> Pre-packaged foods





Internal pathways and common services

Internal pathways

Indicate whether the pathways connecting the entrance to the beach are flat or with ramps in addition to those already described	Obstacle-free paths
--	---------------------

Toilet and shower accessible to guests with reduced mobility

Number of toilets accessible/usable by guests with reduced mobility	1
Access to the premises	Flat
Usable width of the entrance door	82 cm
Toilet height	51 cm
Open front toilet seat	YES
Support handles	On both sides but very far from the toilet
Flexible hand shower at the side of the toilet	NO
Free space on the sides of the toilet	left 68 cm right 40 cm frontal more than 90 cm
Electric doorbell/phone	YES
Washbasin with space underneath for wheelchair	65 cm
Height from the ground on the bottom edge of the mirror	110 cm
Baby changing table	NO





<p>Accessible shower available for guests with reduced mobility</p>	<p>SI separated from the toilet room</p>
<p>Access to the shower room if separated from the toilet room</p>	<p>Flat</p>
<p>Useful width of the door/entrance gate if separated from the toilet room</p>	<p>80 cm with small opening ramp with 5 cm height difference</p>
<p>Shower type</p>	<p>open-type</p>
<p>Floor-level shower</p>	<p>YES</p>
<p>Shower chair</p>	<p>missing</p>
<p>Grab bar</p>	<p>missing</p>
<p>Presence of shower head or ups and downs</p>	<p>Sliding rails with lowest point reachable by a seated person 131 cm</p>
<p>Electric doorbell/phone</p>	<p>NO</p>





	<p>Access to the shower room</p>
--	----------------------------------

Changing room



<p>Accessible changing room available for guests with reduced mobility</p>	<p>YES</p>
<p>Access to the premises</p>	<p>Flat</p>
<p>Usable door/entrance width</p>	<p>78 cm</p>
<p>Size of the dressing room</p>	<p>width 150 cm and depth 175 cm</p>
<p>Presence of a cot</p>	<p>NO</p>
<p>Coat rack height from the ground</p>	<p>Missing coat rack</p>

	<p>Access to the changing room</p>
--	------------------------------------





Beach

Type of beach	sand
Access to the beach	Flat
Walkway to reach the umbrellas	YES
Type of walkway	wood
Walkway width	100 cm
	
Removable Platform between the walkway and the umbrella station to facilitate the passage and parking wheelchair	YES
Amphibious beach chair available for helping people with reduced mobility to enjoy swimming (owned by the establishment or by association)	YES





Umbrella stations with platforms

Children's play area

Children's play area	missing
----------------------	---------

Swimming pool

The property has a swimming pool	NO
----------------------------------	----

Doctors' Offices/Healthcare Facilities

Hospitals near the facility	NOA NUOVO OSPEDALE APUANE Via Enrico Mattei, 2, 54100 Marina di Massa MS tel.: +39 0585 4931
Other Healthcare Facilities	Località Partaccia via delle Pinete 197/b Marina di Massa Tel.: +39 335 8001617

TESTED BY: **Handy Superabile Social Promotion Association in summer 2023**

